



Social Cooperative
"KoiSPE Corfu - New Horizons"



"SOCIAL COOPERATIVE of CORFU - KOISPE NEW HORIZONS"

"INNOVATIVE SOCIAL ENTREPRENEURSHIP IN MEETING SOCIAL NEEDS"

Thanasis Papavlasopoulos, MSc, Economist

General Manager, "KOISPE Corfu – New Horizons"



10th EUSAIR Forum

Georgioupolis, Crete

6-7 May 2025



Purpose of Presentation

Brief description of:

- Social innovation and Social Economy
- Social Entrepreneurship in Greece through Social Cooperatives of Limited Liability
- Social Cooperative “KOISPE Corfu”, example of social innovation in action
- The Fundamental Pillars of Sustainable Development
- Integrating social innovation in circular economy
- Achieving the UN Sustainable Development Goals





Social Innovation

- Social innovation is discussed around the world as vitally important issue. There is increasing attention and government support for social development and social innovation, because it is seen as providing effective ways for addressing societal challenges and possible pathway towards **more sustainable, inclusive and resilient societies**.
- Today's global challenges, in line with the Sustainable Development Goals - from climate change to unemployment and poverty - are as much economic as they are social. The economic crisis reminds us of the importance of **mobilising all possible resources** - not only to generate economic benefits, but also to anticipate and address social problems.
- Social innovation is the process of developing and **implementing new ideas**, products, services or models that address social or environmental problems in a more effective, efficient or equitable way than existing solutions.

Key Features of Social Innovation

- New ideas that meet social needs.
- Focus on: inclusion, equity, sustainability and environmental protection.
- Human-centered.
- Collaborative and sustainable.
- Measurable social impact.



Social Economy and Social Entrepreneurship

- Today, in a period of economic instability, the social economy is internationally one of the main issues of European public policy. The reason is that the social economy **combats social exclusion and unemployment**.
- The social economy seemed to be the best option as an additional **source of employment, as it creates jobs** by meeting social needs and very often using the socially excluded.
- Social entrepreneurship and social innovation actively address socio-economic and environmental challenges and contribute to a just twin transition, aiming to ensure that marginalized groups to not left behind and that the benefits of these transitions are shared equitably.
- The main enterprises active in the field of social entrepreneurship in Greece are **Social Cooperatives of Limited Liability** (abbreviation: KoiSPE) .

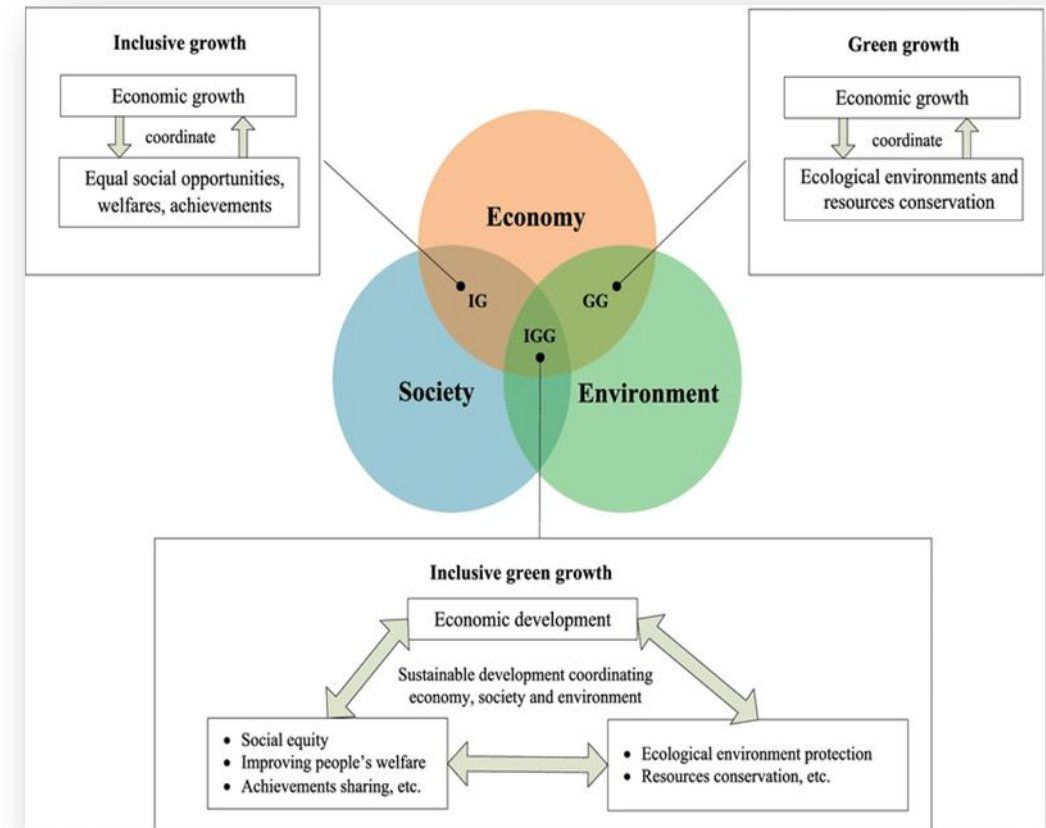


The Fundamental Pillars of Sustainable development

A sustainable economy is guided and constrained by ecological, social, and economic principles. In other words, to achieve sustainable development, there must be economic progress, social justice, and environmental preservation. Therefore, sustainability consists of three pillars: economy, society, and the environment.

- **The social pillar**, or 'people,' emphasises fair business practices for employees and the community, social equity, well-being, solidarity
- **The environmental pillar**, 'planet,' encourages the responsible use of resources to protect the environment.
- **The economic pillar**, 'profit,' involves the creating of economic value and also takes into account environmental and social costs.

Social Cooperatives KOISPE base their Development on these 3 Fundamental Pillars





Social Cooperatives in Greece



- Social Cooperatives of Limited Liability (abbreviation: KoiSPE) are Units of Mental Health.
- The supervision belong to the Ministry of Health Care.
- They are Private Legal Entities, with limited responsibility for their members.
- Supporting the social & economic inclusion of people with Mental Health Disabilities and other Socially Vulnerable Groups (**physical, sensory, intellectual disabilities, long-term unemployed, needy families**).

Social Cooperatives apply innovative entrepreneurship models that:

- Create employment for marginalized individuals and Strengthen local communities
- Combine healing with work through democratic governance.
- The profits are reinvested in the cooperative **in treatment activities, training or new jobs**.
- Based on the principles of equal participation, cooperation and solidarity among its members.
- Operate democratically (one member = one vote).
- Develop activities to meet educational, cultural and social needs.
- Respect each person's particular characteristics, diversity, uniqueness, strengths and weaknesses



Social Cooperatives - KOI.S.P.E... a practical example of social innovation in action

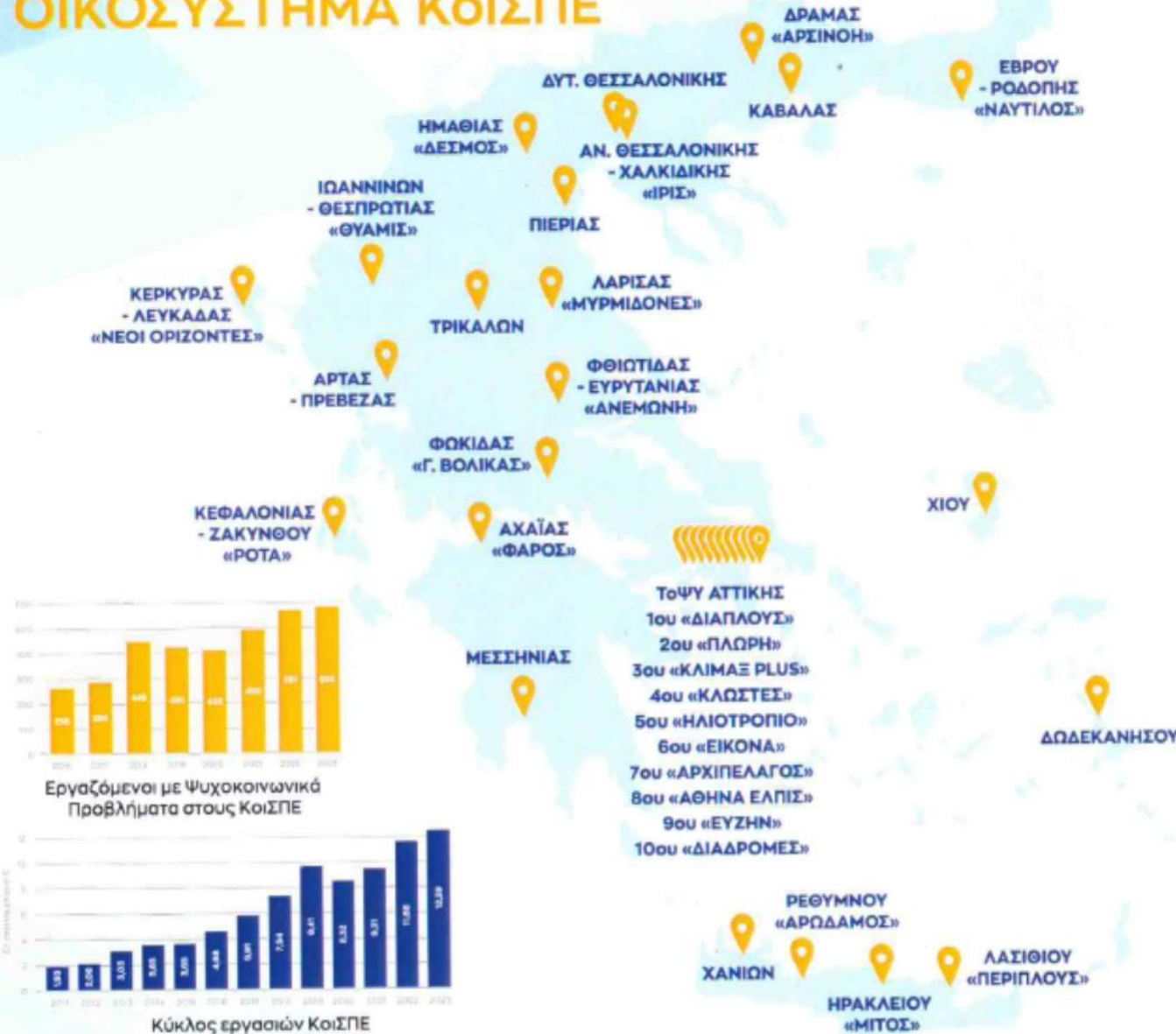


- Social Cooperatives combine entrepreneurship with inclusion, addressing both social and economic needs. Their work enhances community cohesion and reduces social exclusion.
- Social cooperatives are also seen as an effective vehicle of supporting the labour market integration of disadvantaged people.
- The primary objective is to create better conditions for people both locally and regionally, while profit is merely a means to achieve economic goals.

Vision of Social Cooperatives

- Vision includes a new and different business proposition. The mission of Social Cooperatives is the development and maintenance of sustainable entrepreneurial activities in the Social Solidarity Economy sector.
- Their activities aim to improve the social and working integration conditions of people with psychosocial difficulties and other disabilities in a working environment that promotes their mental health and wellbeing.

ΟΙΚΟΣΥΣΤΗΜΑ ΚοιΣΠΕ



* Σύμφωνα με στοιχεία που συλλέγει και επεξεργάζεται η Πανελλήνια Ομοσπονδία Κοινωνικών Συνεταιρισμών Περιορισμένης Ευθύνης



Επικοινωνήστε μαζί μας

ΠΟΚοιΣΠΕ

33

ΚοιΣΠΕ

& 5 πρωτοβουλίες
σύστασης νέων

1.374

Εργαζόμενοι

με μερική ή πλήρη απασχόληση
εκ των οποίων **593** Άτομα με
Ψυχοκοινωνικά Προβλήματα

3.400

Συνεταίριστές

εκ των οποίων **1.650**
Άτομα με Ψυχοκοινωνικά
Προβλήματα

12,39

Εκ. Ευρώ

κύκλος εργασιών
έτους 2023

- Social Cooperative of Corfu develops activities in 3 sector of economy: agricultural , standardization, services provision , as well as cultural and educational activities .
- Activities: Organic Products, Plants, Catering, Café shop, Restaurant, Cleaning Services, Environmental Care & Gardening, Tourism.



Creating a Resilient Agricultural System that contributes to a more Sustainable Environment



Develop Environmental Park

KOISPE Corfu operates an environmental park of 20.000 sq meters, cultivating, producing and distributing organic products, citrus fruits as well as two greenhouses. Also, koispe is developing a small workshop for the standardization of local products (oil, kumquat spoon sweets).

In collaboration with primary and secondary education services, we implement training sessions for students on topics related to the development of alternative organic crops, sustainability, regenerative agriculture.

Focusing on soil health, biodiversity, we create resilient agricultural systems that contribute to a more sustainable environment.





"Social Groceries and Social Kitchen in the City and Region of Corfu",



KOISPE in cooperation with the 3 Municipalities of the island operates "Social Groceries and Social Kitchen in the City and the Region of Corfu. The purpose of the Social Structures is to cover the primary survival needs of needy families. Beneficiaries can have access to psychosocial support, counseling and referral to other facilities, where they can also seek assistant and social protection.

The Social Grocery provides free groceries, frozen products, clothes, household equipment, toys, etc. to families facing serious financial problems. The Social Kitchen operates daily and provides meals to feed the beneficiaries in an organized space with a dining room, kitchen, utility rooms and offices.

As of 2018 the social kitchen distributed 220.000 meals, while the social grocery distributed more than 270.000 products. Both the social grocery and the social kitchen support 340 beneficiaries.

270.000
basic foods



340
beneficiaries



220.000
Social meals

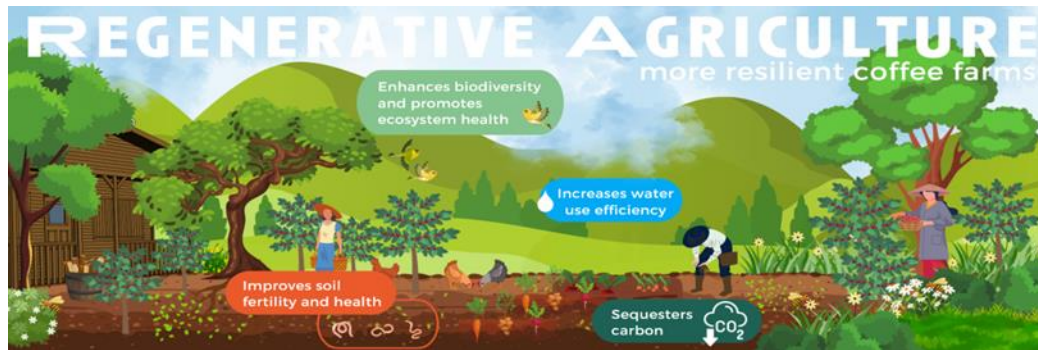




Integrating social innovation in circular economy

The concept of the circular economy responds to the ambition for sustainable development in the context of increasing pressure from the production and consumption of resources and the the planet's environment. When the circular economy and social innovation coexist, not only will environmental impacts be reduced but also resilient communities will be created.

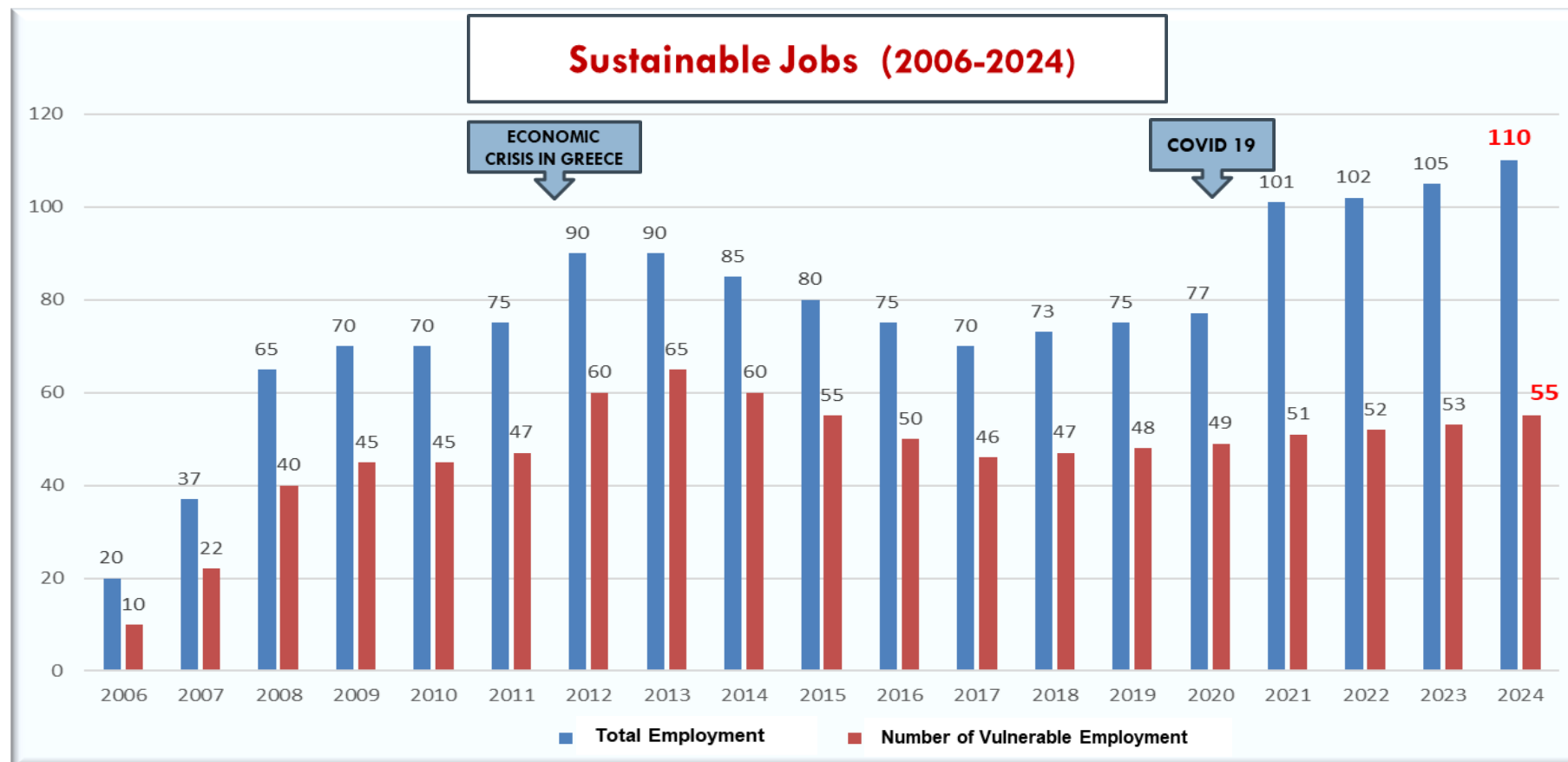
KOISPE Corfu implements circular economy practices such as: **recycling of glass, paper, plastic, regenerative agriculture activities, recycling of frying oil, use of dispensing containers for cleaning fluids and refillable containers, use of recyclable paper, recycling of batteries, zero food waste, composting of organic products**





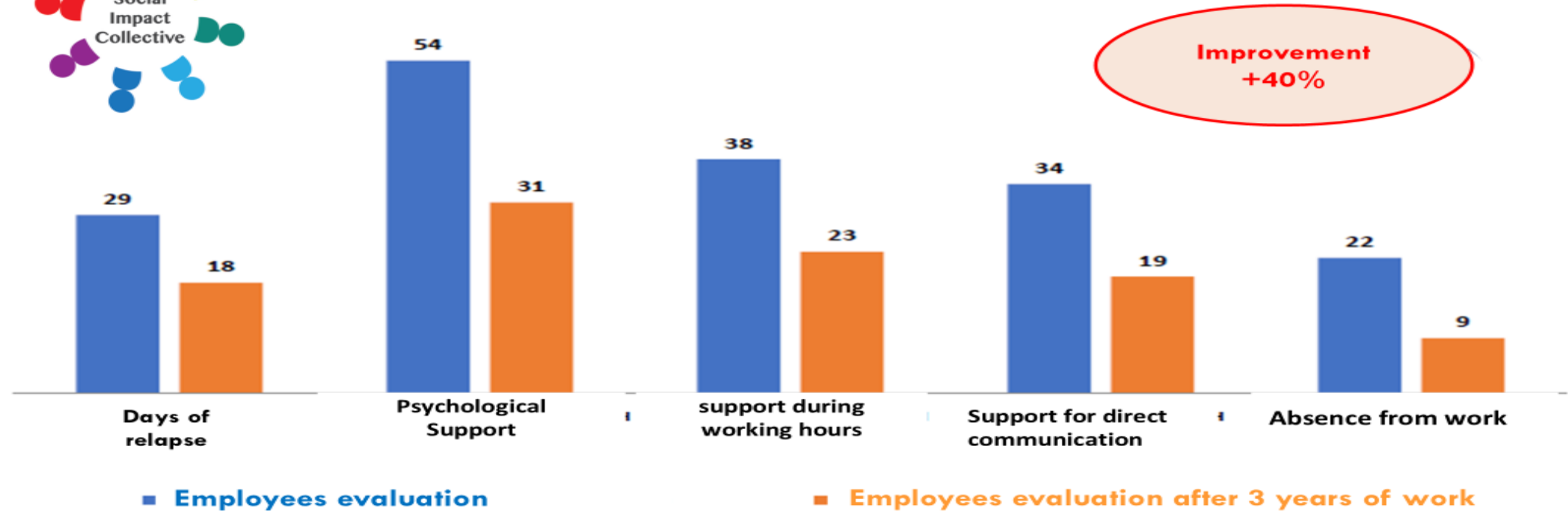
Annual Revenues of KOISPE Corfu increased the last 5 years + 100% and estimate that will approach 2.000.000 euro in 2025

The annual Personnel Salary Expenses amount to 1.300.000,00 euro
In times of economic crisis in Greece and Covid-19,
we have maintained and increased the number of employment positions.





Improvement of social Indicators



- We assessed employees belonging to socially vulnerable groups before they started working in the cooperative and their development after 3 years of work.
- There was significant improvement in specific social indicators related to reduction in medication, reduction in relapses, absence from work and improvement of communication skills.



Social Cooperative "KoiSPE Corfu - New Horizons"



Statistics - Financial Data (2006-2024)

State Revenue:

8.360.000,00 €

(Payment of Insurance Contributions, VAT and Taxes, Fees)

Co - Funding Projects, Grants :

2.820.000,00 €

(National & European Funding / European Social Fund, Ministry of Health,
Ionian Islands Regional Operational Programme, National Strategic Reference Framework)

For every €1.00 of funding, €3.00 is returned to the state

(meaning +300% multiplier effect on national income and product)



10th EUSAIR Forum
Georgiopolis, Crete 6-7 May 2025



The European Commission (EC) has published a special edition of good practices from 27 countries, showing how Public Authorities have implemented Socially Responsible Public Procurement (SRPP). The EC Project Team selected from Greece to be included in the special edition on the good practices in socially responsible procurement, the cooperation of the KOISPE “New Horizons” with the Municipality of Corfu in the field of Catering.

Socially Responsible Public Procurement

Provision of school meals for the Corfu Music School and meals for women and children hosted in the Corfu Social Hostel for Victims of Domestic Violence.

Lessons learned

This case was a bold attempt by a small local authority to move towards a more complex model of exclusive tenders in cooperation with a social enterprise.

Social impact

The SRPP aims to address the impact on society of the goods, services and works purchased by the public sector:

***Promoting employment opportunities and social inclusion ,
Providing opportunities for social economy enterprises,
Encouraging decent work,
Accessibility and design for all.***

In general, the economic activity of KoiSPE Corfu has also contributed to **the local economic and social development** of the island.



10th EUSAIR Forum
Georgiopolis, Crete 6-7 May 2025

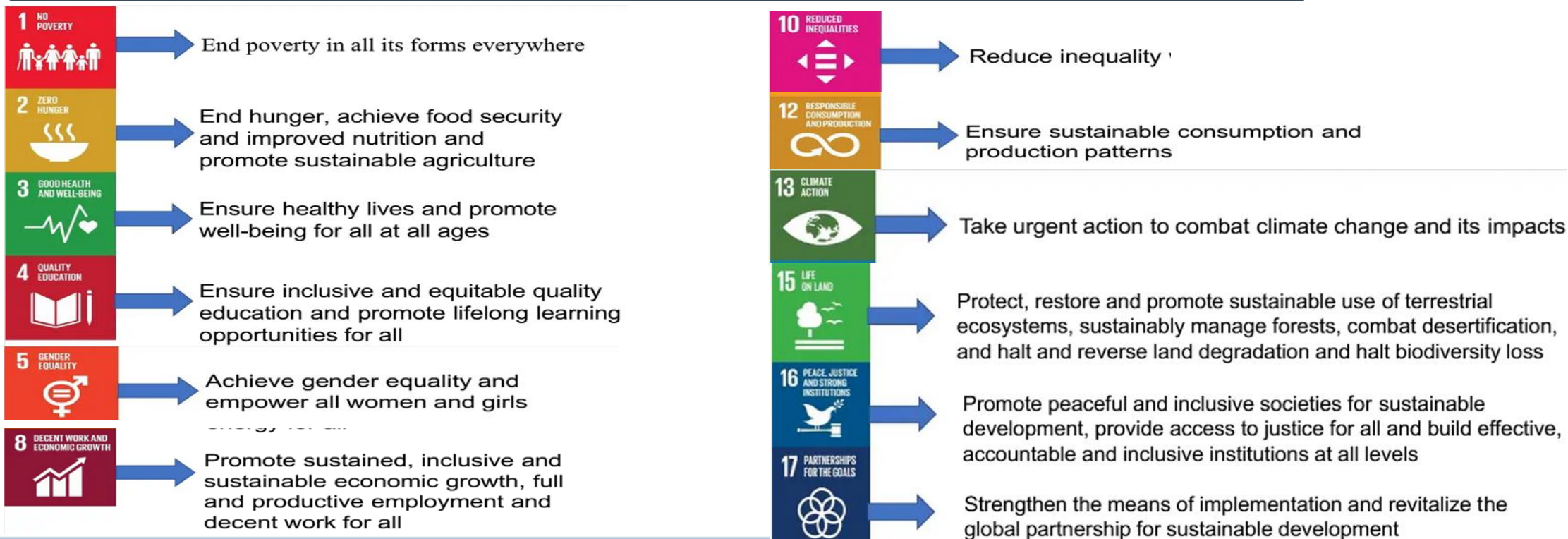


The Social Innovative Actions of Koi.S.P.E. Corfu have been presented in Hellenic and European level and have been awarded by European Social Fund, European Commission, Ministry of Health, Ministry of Labor, European Network of Social Enterprises, Association of Educational Institutes of the EU and World Health Organization.





Social Cooperative KOISPE CORFU achieving 12 from 17 Sustainable Development Goals of UN.





Social Cooperative Koispe Corfu....

A Sustainable Social Innovative Model

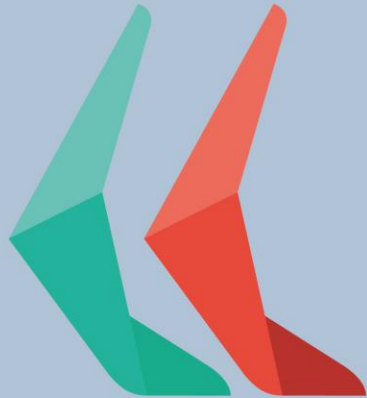


- The cooperative model is the most viable solution for social inclusion and economic sustainability. Koispe Corfu Social Cooperative is able to maintain and increase jobs, even in the economic crisis, provide socially innovative solutions and address the need for social inclusion of vulnerable groups in society.
- With respect to planet earth, human beings, quality of life and ecological awareness and responsibility, we act to create new conditions for the development of innovative and entrepreneurial initiatives.
- The importance of sustainability and social innovation is undeniable. We need to work together in order to create a better future for ourselves and future generations.

10th EUSAIR Forum

Georgioupolis, Crete

6-7 May 2025



Thank you