

Accelerating climate change adaptation in the Adriatic and Ionian Region

8-9 April 2025, Corfu (Greece)

Practical Information for Participants

- Registration** Participants are kindly requested to register [here](#)
Registration is open till 4 April 2025
- Place** 📍 Island of Corfu, Greece
- Venue** **Event Hall of the Region of Ionian Islands**
address: K. Zavitsianou 1, Spilia, 49100 Corfu, Greece



With the contribution
of the LIFE Programme
of the European Union



With the
contribution of
the Green Fund

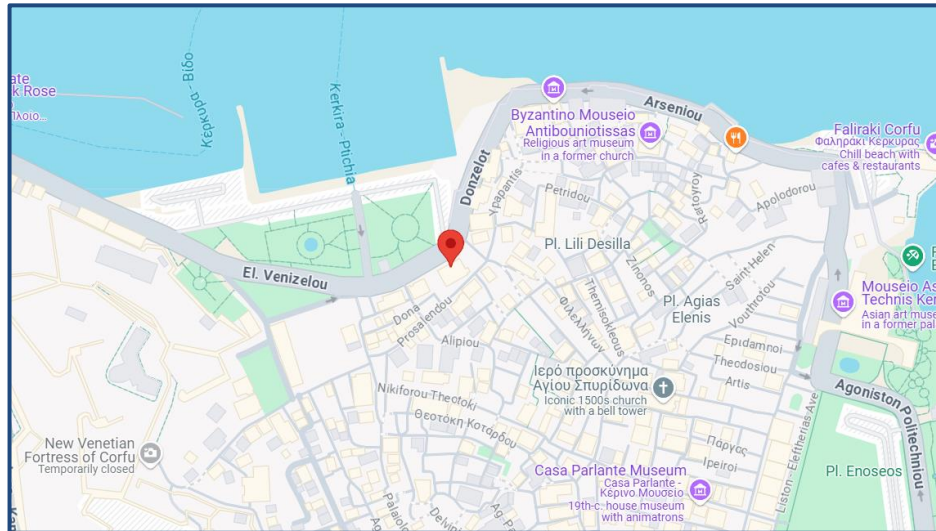
Interreg  Co-funded by
the European Union

IPA ADRION

FACILITYPOINT

Strategic project EUSAIR FACILITY POINT is
co-funded by the European Union through the
Interreg IPA ADRION Program 2021-2027

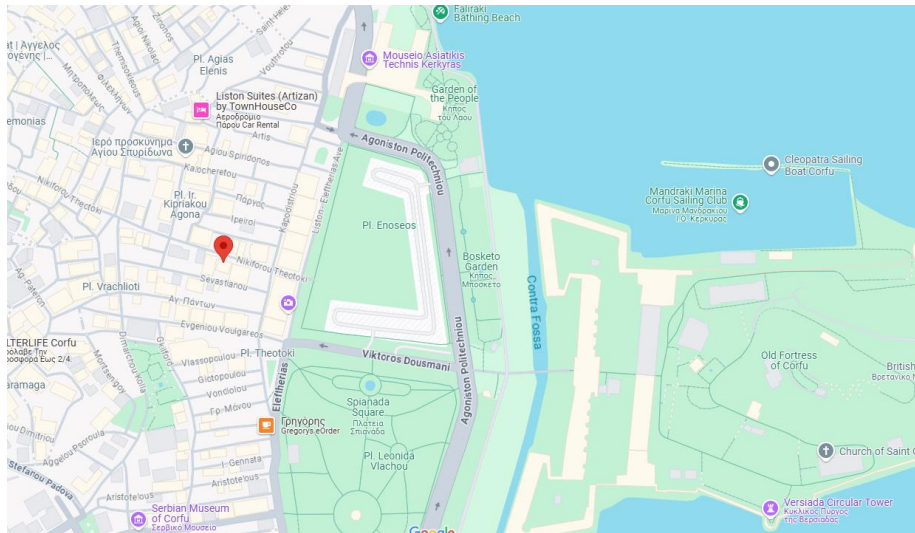
Location of the Event Hall of the Region of Ionian Islands



In the heart of the Corfu town!

<https://maps.app.goo.gl/vsPVJ5iPVctu3T7U8>

Location of the museums



Museum CASA PARLANTE & Museum of the Philharmonic Society of Corfu (Nikiforou Theotoki str. 16)

<https://maps.app.goo.gl/Rpfs9L4QffJgZh7k7>



With the contribution of the LIFE Programme of the European Union



With the contribution of the Green Fund

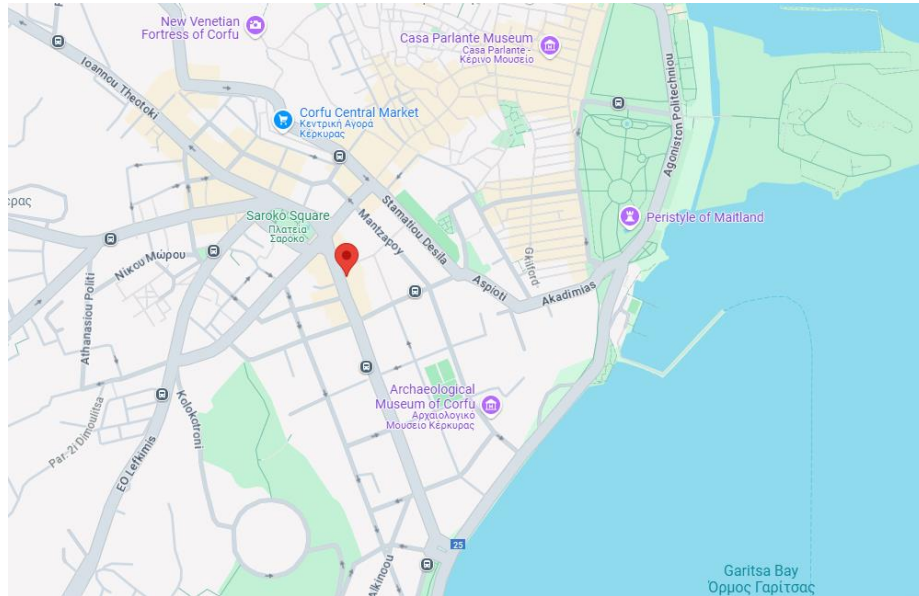
Interreg Co-funded by the European Union

IPA ADRION

FACILITYPOINT

Strategic project EUSAIR FACILITY POINT is co-funded by the European Union through the Interreg IPA ADRION Program 2021-2027

Location of Corfu Philharmonic Society



Rehearsal for the Easter Concert of the Philharmonic Society of Corfu, Municipal Theater of Corfu (Samara str. 13)

<https://maps.app.goo.gl/CG7q34Lnx9nZqzkK7>

History of Corfu Philharmonic Society

*The **Corfu Philharmonic Society** was founded on 12 September 1840, and it is the earliest musical institution in Greece. The founders of the Corfu Philharmonic Society set off the organization of a musical institution that would offer both practical and theoretical instruction. During 19th century and until 1930s the position of the Society's artistic director was held by some of the most important Greek composers of that time, such as Nikolaos Mantzaros (1795-1872), Domenikos Padovas (1817-1892), Dionissios Rodotheatos (1849-1892), Dimitrios Andronis (1866-1918) and Spiridon Doukakis (1886-1974). All of them were from Corfu and had important studies in Italy and Germany. The opera composer Spiros Samaras (1861-1917), who is also the composer of the Olympic Anthem (Athens, 1896) was the Honorary Artistic Director since 1889. Several graduates of Corfu Philharmonic Society became composers, performers, bandmasters and conductors, and played important role in the formation of art music in 19th and early 20th century Greece.*

*During the last 185 years of its activity, the windband of the Corfu Philharmonic Society has performed in several cities of Greece, as well as abroad (Italy, New York (1995, 2024), Moscow, Belgrade). Since 2015 the Corfu Philharmonic Society is an examination centre for the graded exams of the Trinity College London. In 2017 Corfu Philharmonic Society revived the opera *The Parliamentary Candidate*, the earliest full-scale opera in Greek composed in 1867 by its initial founder Spiridon Xindas (1817-1896).*



With the contribution of the LIFE Programme of the European Union



With the contribution of the Green Fund

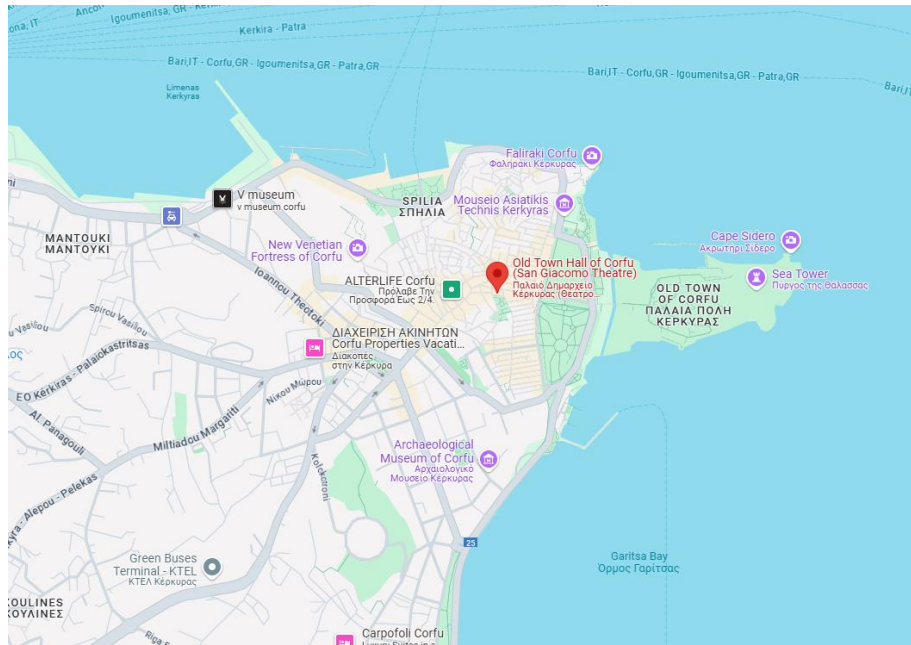


IPA ADRION

FACILITYPOINT

Strategic project EUSAIR FACILITY POINT is co-funded by the European Union through the Interreg IPA ADRION Program 2021-2027

San Giacomo Theatre and Town Hall



<https://maps.app.goo.gl/voUVC3mavoAxnX4k6>

Traveling to Corfu

By flight

Corfu International Airport "Ioannis Kapodistrias"

By ferry

Ferries to Corfu from the Greek mainland depart from the ports of Igoumenitsa and Patras

Transport from the airport to the city center

By Public Bus

Bus line No. 15 "Airport- KTEL Bus Station- Town (San Rocco)- Port" connects the Airport to the city of Corfu. The bus stop is located in front of the Terminal Building A.

More information:

<https://astikoktelkerkyras.gr/wp-content/uploads/dromologia/15-airport.pdf>

<https://astikoktelkerkyras.gr/en/tickets/>

By Taxi

TAXI service is available at the Airport. TAXI stand is located opposite to the Terminal Building A.



With the contribution
of the LIFE Programme
of the European Union



With the
contribution of
the Green Fund

Interreg  Co-funded by
the European Union

IPA ADRION

FACILITYPOINT

Strategic project EUSAIR FACILITY POINT is
co-funded by the European Union through the
Interreg IPA ADRION Program 2021-2027

From the port of Corfu to the city center

By Public Bus

Bus lines connecting the port of Corfu to the city center:

Line No. 15 Port- Town (San Rocco)-KTEL Bus Station- Airport

Line No.15 connects the port with the airport of Corfu. The line departs within the port, from the mooring area of cruise ships and ships that go to Albania. It passes through the city center and particularly through San Rocco Square (departure points) and finally terminates at the airport.

Line No. 2b: It starts from the area of Kefalomantouko, passes through the port of Corfu and terminates at the city center – San Rocco Square.

More information:

<https://astikoktelkerkyras.gr/en/connection-with-port/>

<https://astikoktelkerkyras.gr/wp-content/uploads/dromologia/2b.pdf>

<https://astikoktelkerkyras.gr/wp-content/uploads/dromologia/15-port.pdf>

<https://astikoktelkerkyras.gr/en/tickets/>

By Taxi

TAXI service is available at the port.

Draft agenda Overview

DAY 1: TUESDAY, 8 APRIL 2025	
09.00 - 09.30	<ul style="list-style-type: none"> Registration
Morning Sessions 09.30 - 13.10	<ul style="list-style-type: none"> Welcome and opening remarks The impacts of climate change in the Adriatic–Ionian Region <u>Session 1</u>: Climate change adaptation policies in the Adriatic and Ionian Region
Afternoon sessions 14.15 - 17.30	<ul style="list-style-type: none"> <u>Session 2</u>: Climate services and information for adaptation policy making <u>Session 3</u>: Finance tools to support climate change adaptation in the Adriatic and Ionian Region Wrap & Closing Remarks Day-1
Evening 18.00-20.00	<ul style="list-style-type: none"> <u>Guided tours</u>: Museum CASA PARLANTE & Museum of the Philharmonic Society of Corfu Rehearsal for the <u>Easter Concert</u> of the Philharmonic Society of Corfu



With the contribution of the LIFE Programme of the European Union



With the contribution of the Green Fund

Interreg  Co-funded by the European Union

IPA ADRION

FACILITYPOINT

Strategic project EUSAIR FACILITY POINT is co-funded by the European Union through the Interreg IPA ADRION Program 2021-2027

DAY 2: WEDNESDAY, 9 APRIL 2025	
Morning Sessions 09.30 - 12.45	<ul style="list-style-type: none"> Opening remarks <u>Session 4</u>: Adapting infrastructure to future climate <u>Session 5</u>: Climate change vulnerability and resilience of tourism
Afternoon sessions 14.10 - 17.00	<ul style="list-style-type: none"> <u>Session 6</u>: Adaptive cities and communities <u>Panel Discussion</u>: Conclusion & Feedback to the Strategy and Action Plan for the Adriatic and Ionian Region Wrap-up and closing remarks
Evening 17.30-19.00	<ul style="list-style-type: none"> <u>Study visit</u>: Climate Vulnerability & Resilience of cultural heritage in the Adriatic Ionian Region – The case study of the Old Town of Corfu (UNESCO World Heritage Site)

Accommodation Recommended hotels

Special offers may be provided for the event participants (upon availability)

Hotel	Contact details/Reservations
CAVALIERI HOTEL	info@cavalieri-hotel.com Tel. (+30) 26610-39041
ARCADION HOTEL	info@arcadionhotel.com Tel. (+30) 26610-37670
BELLA VENEZIA	info@bellaveneziahotel.com Tel. (+30) 26610-46500
CORFU MARE BOUTIQUE HOTEL (2 km from center)	info@corfumare.gr Tel. (+30) 26610-25804



With the contribution
of the LIFE Programme
of the European Union



With the
contribution of
the Green Fund

Interreg  Co-funded by
the European Union

IPA ADRION

FACILITYPOINT

Strategic project EUSAIR FACILITY POINT is
co-funded by the European Union through the
Interreg IPA ADRION Program 2021-2027



Contact

For further info contact the LIFE-IP AdaptInGR project team

Email: adaptive.eusair@gmail.com

Tel.: (+30) 2108643015 (available until Friday, 04-04-2025)

Emergency numbers

First Aid

Medical First Aid Tel: **166**

First aid, emergency – Corfu General Hospital (Kontokali area)

Tel: **(+30) 2661360400 & (+30) 2661360500**

Corfu General Hospital - Secretariat for appointments Tel: **(+30) 2661360516**

Police and Fire Service Corfu Town

Police Emergency Tel: **100**

Police – Fire department – Tourist Police (New Fortress entrance) Tel: **(+30) 2661030265**

International Emergency Number Tel: **112**

More information:

<https://corfutourist.com/corfu-emergency-24hr>

<https://whatsoncorfu.com/useful-contacts/>

adaptivgreece®

LIFE-IP AdaptInGR - LIFE17 IPC/GR/000006

Boosting the implementation of adaptation policy across Greece

www.adaptivegreece.gr



With the contribution
of the LIFE Programme
of the European Union



With the
contribution of
the Green Fund

Interreg  Co-funded by
the European Union

IPA ADRION

FACILITYPOINT

Strategic project EUSAIR FACILITY POINT is
co-funded by the European Union through the
Interreg IPA ADRION Program 2021-2027