



**TEDEN SREDOZEMSKO OBALE
IN MAKROREGIONALNIH
STRATEGIJ**

Izola, Slovenija
18. – 22. september 2023

**MEDITERRANEAN COAST
AND MACRO-REGIONAL
STRATEGIES WEEK**

Izola, Slovenia
18 – 22 September 2023

SLOVENIAN MARITIME SPATIAL PLAN – CUMULATIVE IMPACTS AND CARRYING CAPACITY

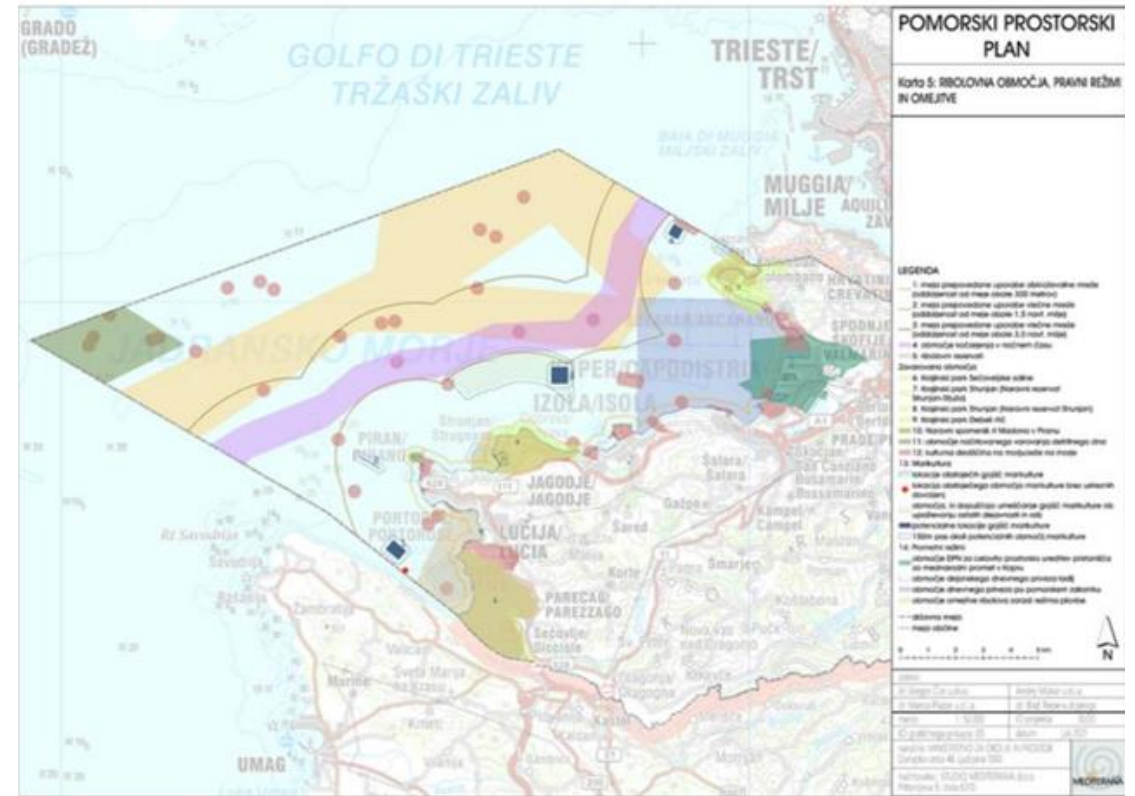
Sabina Cepuš, ZaVita d.o.o., Mediterranean coast and macro-regional
strategies week, Izola, 21.9.2023



Content

- Maritime Spatial Plan of Slovenia – MSP Slovenia
- Checking the possibility to determine the carrying capacity of the sea
- Assessment of acceptability and cumulative impacts for spatial arrangements planned with the Maritime Spatial Plan of Slovenia

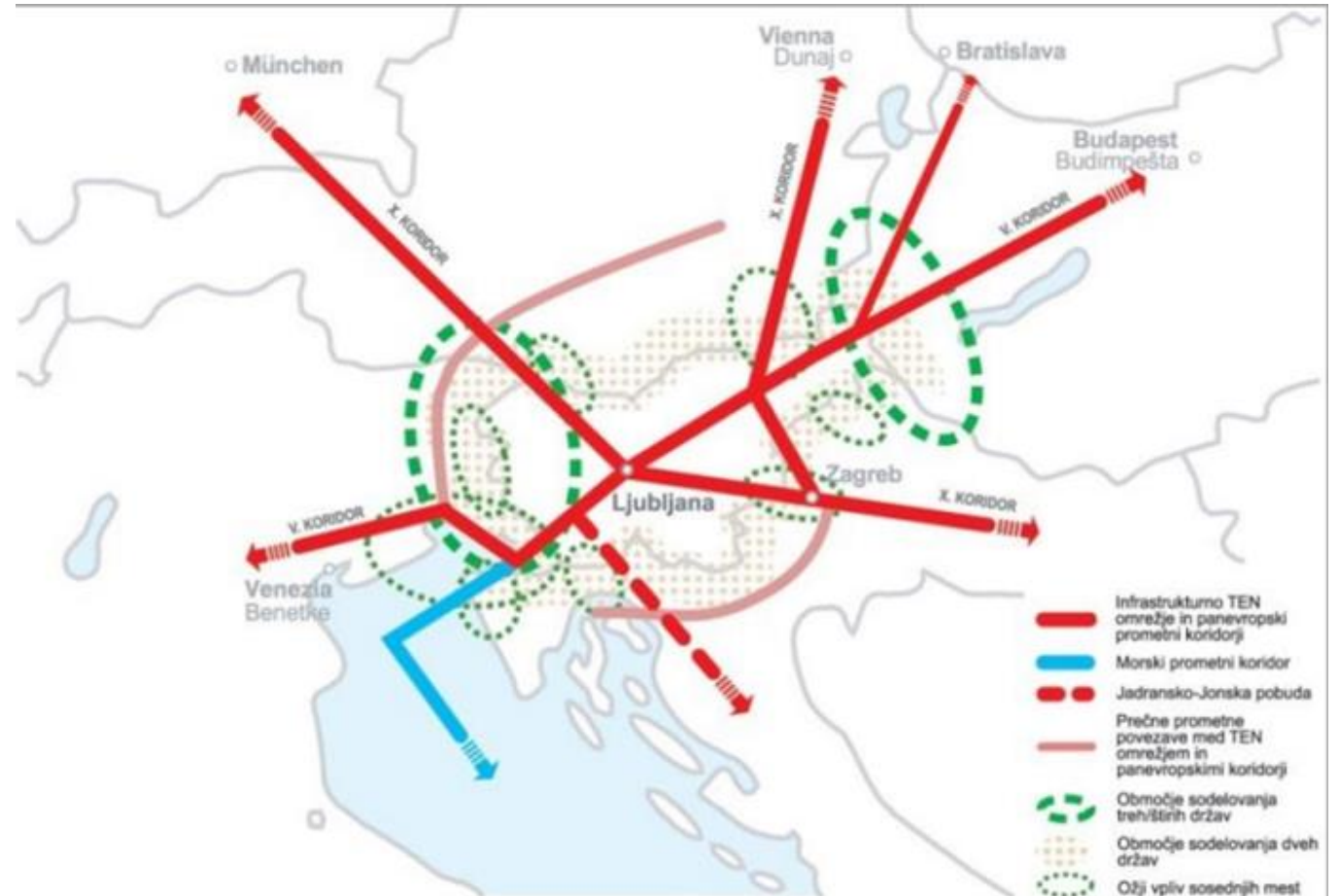
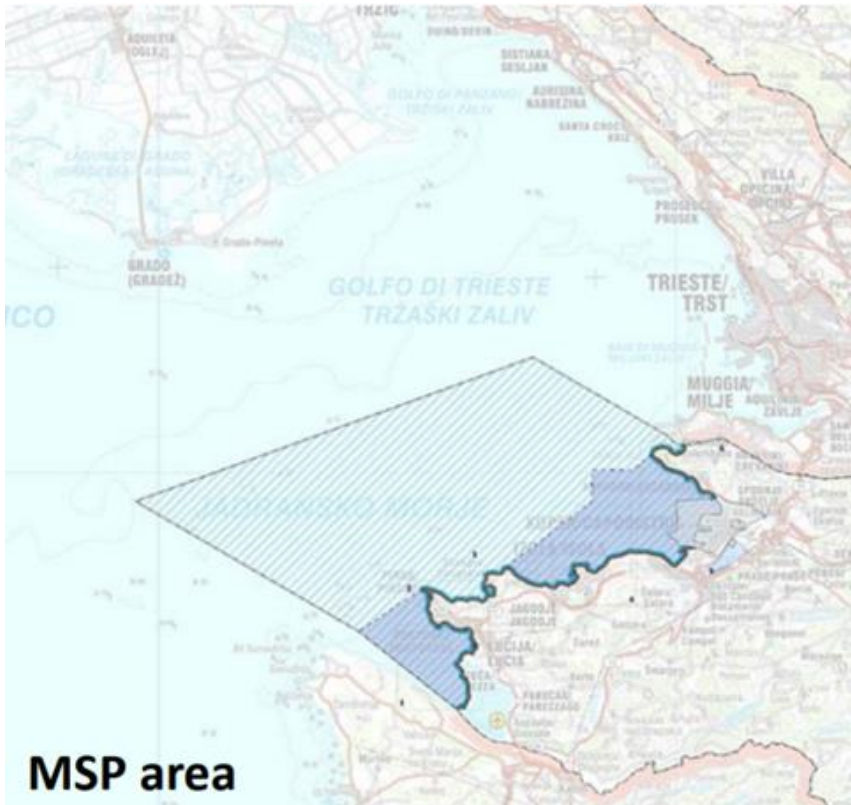
- cross-border influences



Maritime Spatial Plan of Slovenia – MSP

Slovenia

- Adopted in July 2021



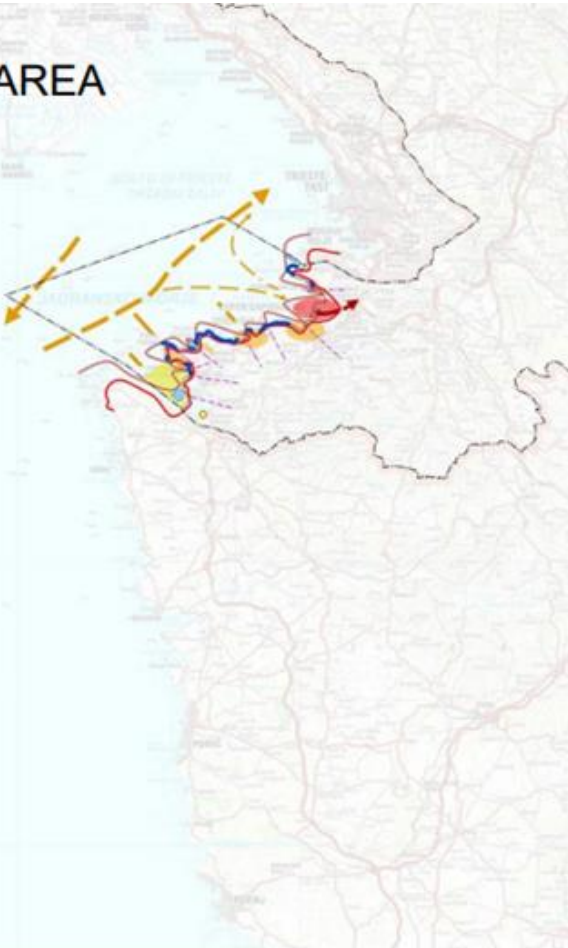
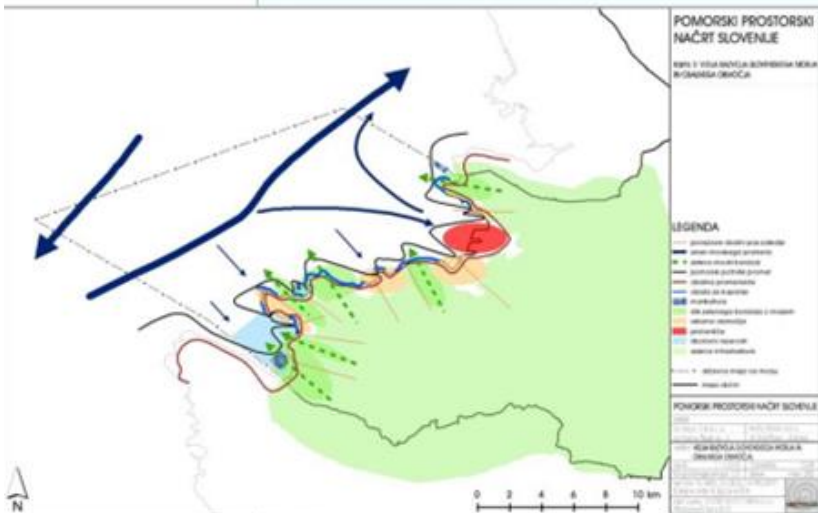
Karta št.2

SLOVENSKI INTERESI V MEDNARODNEM POVEZOVANJU

Map 3: SLOVENIAN SEA AND COASTAL AREA DEVELOPMENT VISION

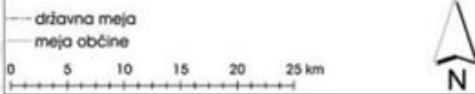
POMORSKI PROSTORSKI PLAN

Karta 3: ZASNOVA RAZVOJA SLOVENSKEGA MORJA IN OBALNEGA OBMOČJA

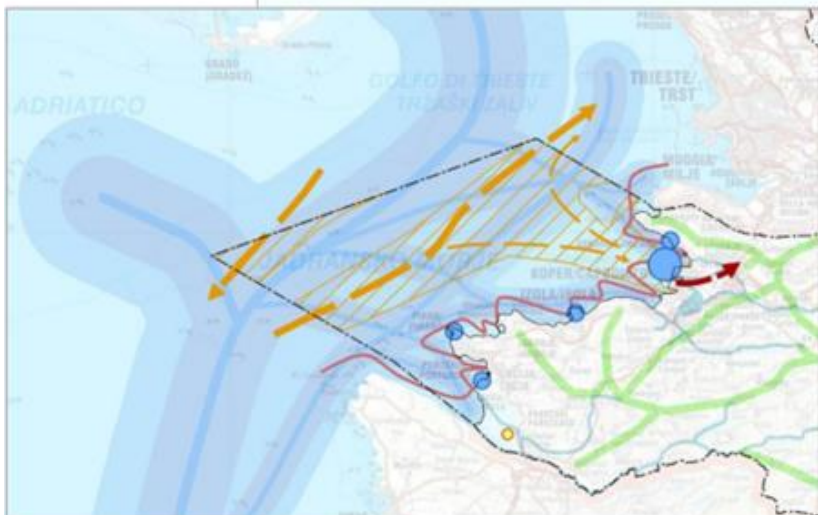


LEGENDA

- povezave zaledje - morje
- smeri pomorskega prometa
- povezava s kopenskimi prometnimi sistemi
- pomorski potniški promet
- obala za kopanje
- obalna promenada
- marikultura
- ribolovni rezervat
- pristanišče
- urbana območja
- letališče



Izdelal:	
dr. Gregor Čok u.d.i.a.	Andrej Makar u.d.i.a.
dr. Manca Pizarar u.d.i.a.	dr. Blaž Repe u.d.geogr.
merilo: 1: 250.000	IO projekta: 10/20
IO grafičnega prikaza: 03	datum: Julij 2021
naročnik: MINISTRSTVO ZA OKOLJE IN PROSTOR Dunajska cesta 48, Ljubljana 1000	
načrtovalec: STUDIO MEDITERANA d.o.o. Pittonjeva 9, Izola 6310	

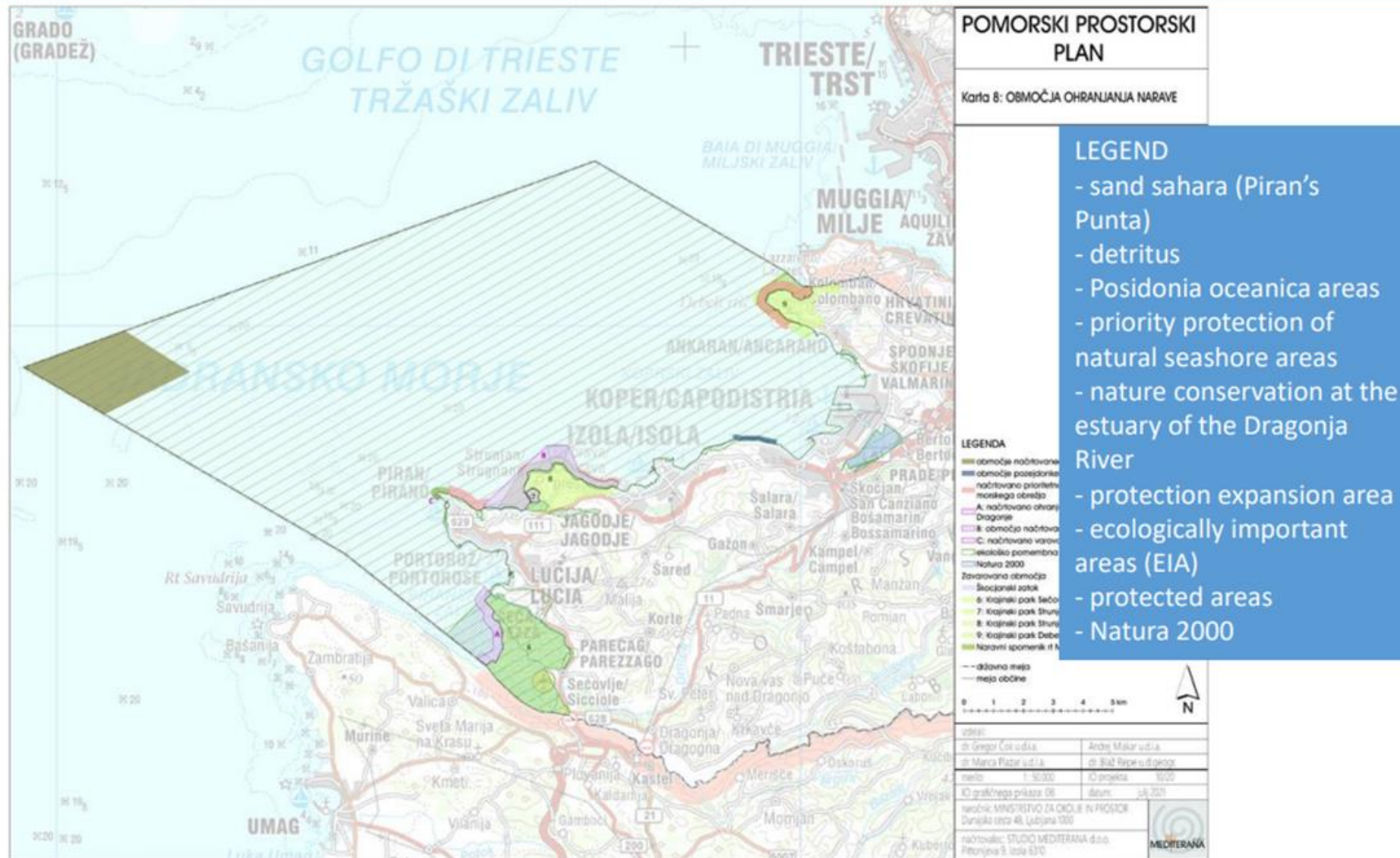


LEGEND

- Land-sea connections
- Maritime traffic directions
- Maritime passenger traffic
- Coastal promenade
- Bathing area
- Mariculture
- Urban areas
- Ports
- Fishing reserve

Map 8: NATURE CONSERVATION AREAS

- general presentation of protection regimes and restrictions,
- protection expansion area



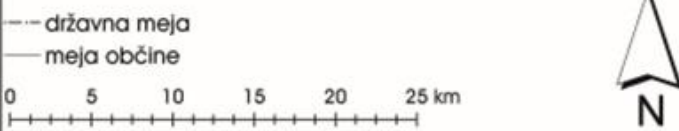


POMORSKI PROSTORSKI PLAN

Karta 2: ČEZMEJNI VPLIVI SLOVENSKEGA MORJA

LEGENDA

- pomorski potniški promet
- smeri pomorskega prometa
- povezava s kopenskimi prometnimi sistemi
- območje sheme ločene plovbe
- pristanišče
- letališče
- MODRI KORIDORJI**
linije modrih koridorjev
- makro raven
- mezo raven
- mikro raven
- območja modrih koridorjev
- cona I, morje
- cona II, morje
- cona III, morje
- celinski, obala
- ZELENI KORIDORJI**
■ celinski, obala



- The role of the Slovenian sea in the wider area – blue and green corridors

izdelali:	
dr. Gregor Čok u.d.i.a.	Andrej Mlakar u.d.i.a.
dr. Manca Plazar u.d.i.a.	dr. Blaž Repe u.d.geogr.
merilo: 1 : 250.000	IO projekta: 10/20
IO grafičnega prikaza: 02	datum: julij 2021
naročnik: MINISTRSTVO ZA OKOLJE IN PROSTOR Dunajska cesta 48, Ljubljana 1000	
načrtovalec: STUDIO MEDITERANA d.o.o. Pittonijeva 9, Izola 6310	



Implementation monitoring

- With efficiency indicators and with regard to marine environment quality descriptors (MSFD).
- The system of spatial indicators shall be determined in greater detail.
- Establishment of the inter-ministerial working group and inter-municipal service of Istrian municipalities
- Spatial development report every four years

Checking the possibility to determine the carrying capacity of the sea

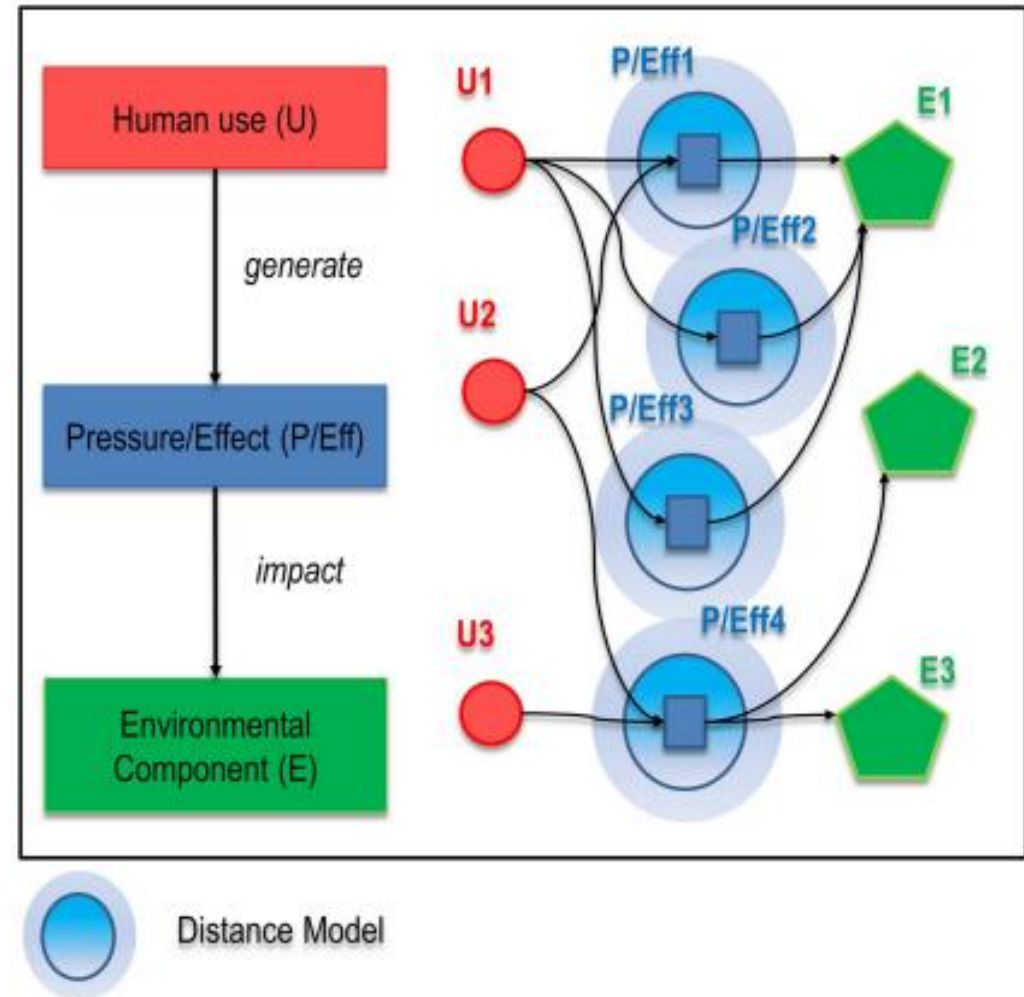
- Provisions of MSP Slovenia for tourist and transport infrastructure expansion
 - need to take into account cumulative impacts on the marine environment and vulnerability, attractiveness and suitability of individual areas
 - need to take into account crossborder impacts
 - prepared starting points for the execution of the task

Analyzed methodologies

1. Sea vulnerability assessment based on EcAp as a basis for spatial planning of the coastal zone in Montenegro (PAP/RAC, MSTD, 2017)
2. Analysis of cumulative impacts and conflicts between uses within the PORTODIMARE project (INTERREG ADRION, 2021)
3. Determining the tourist carrying capacity of protected areas according to the Cifuentes method, MA. (1992)
4. Methodological Framework of Acceptable Change (LAC) (Manning, 2004)
5. Diagnostic model for monitoring and directing tourism development at the destination level (Cvelbar et al., 2021)
6. Jurinčič, I., 2009. Carrying Capacity of Slovenian Istria for tourism.
7. IZVRS, 2020. Final proposal of the methodology for determining the significant impacts of loads on the marine environment and the connection with sectors and related activities, as well as criteria and indicators and updated results of pilot analyzes (final report), Water Institute of the Republic of Slovenia, Dr. Katja Klančnik, Ljubljana, 2020

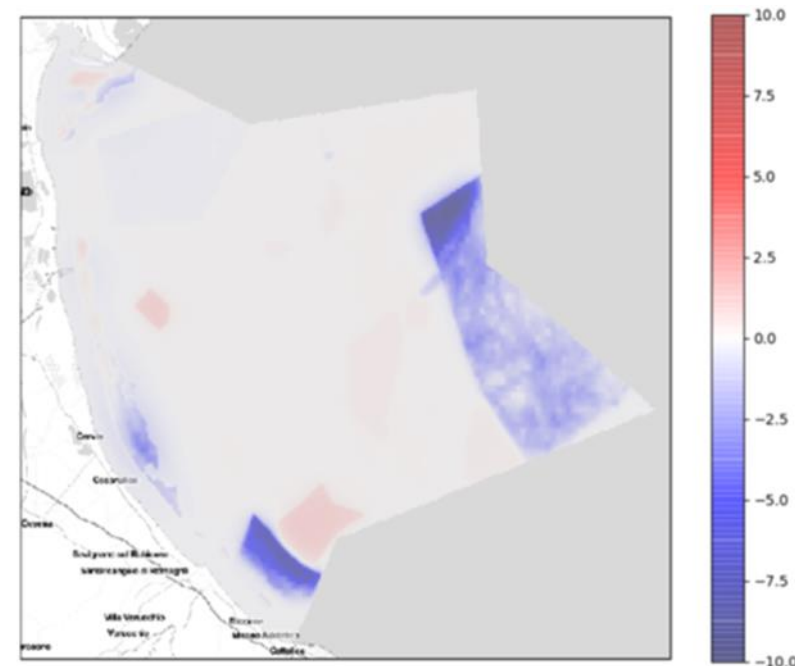
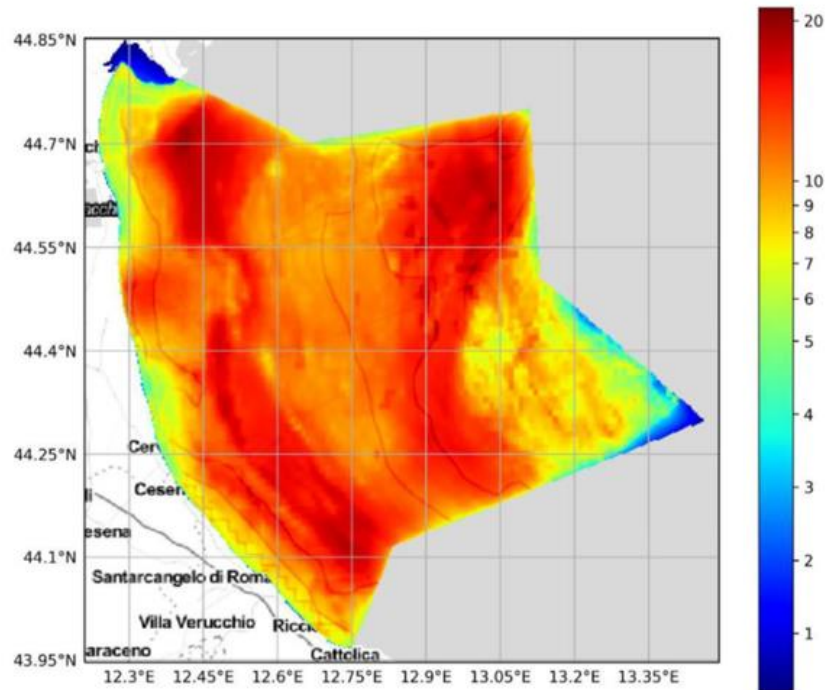
Selected methods – CEA Portodimare

- Cumulative Effects Assessment- based on the Tools4MSP CEA modelling framework
- Identification and understanding of the source-pressure-pathway-receptor linkages
- Cross border impacts – one of the defined marine uses



Selected methods – CEA Portodimare

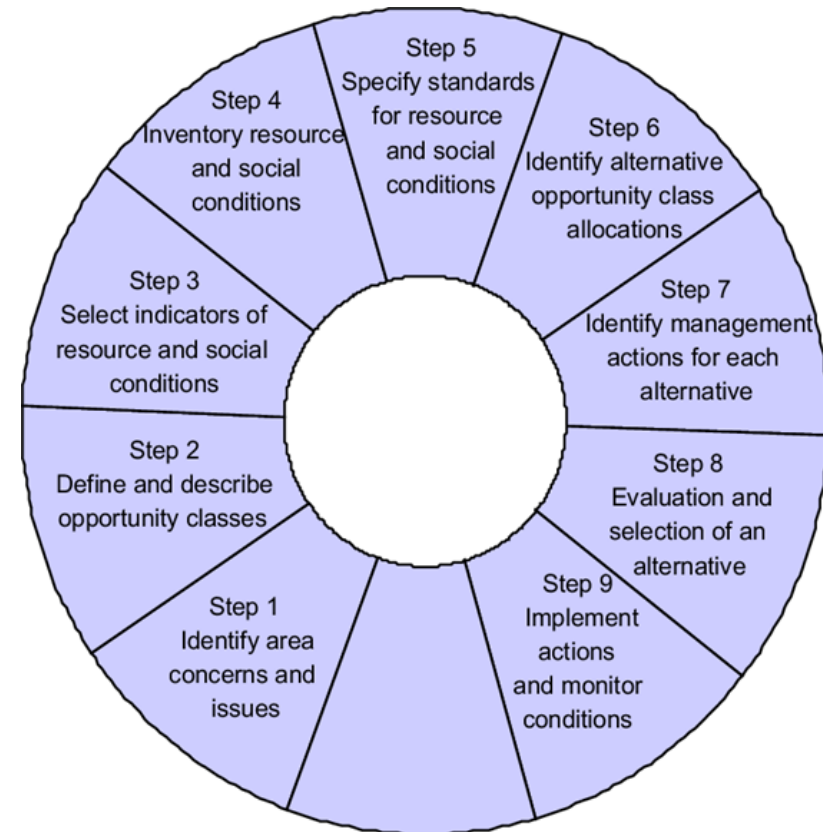
- Results: existing cumulative impacts and expected differences after the implementation of the development scenario



Selected methods - Methodological Framework of Acceptable Change (LAC)

For the coastal strip at sea with expected high levels of cumulative impacts and less clear legal regimes

Result: determine the acceptable changes in the marine environment with regard to environmental indicators and verify the compliance of more defined spatial development scenarios with these limitations



Selected methods - Diagnostic model for monitoring and directing tourism development

- conceptual model of the carrying capacity for tourist destinations,
- a quantitative assessment of the carrying capacities in: environmental, social, economic and political pillar
- diagnostic „traffic lights“ for indicators in all pillars - designed with the help of experts in each field

A case of environmental indicator and measures			
Amount of municipal waste collected per inhabitant	Value	Diagnostics	Measures
	First third	Green	<ul style="list-style-type: none">• Monitor the situation.
	Second third	Yellow	<ul style="list-style-type: none">• Arrangement of sufficient number of containers for separate waste collection in tourist areas facilities and at points visited by tourists/ lines;• Increase the frequency of waste removal in season.
	Third third	Red	<ul style="list-style-type: none">• Greater control of wardens;• Penalties for improper waste management

Assessment of acceptability and cumulative impacts for spatial arrangements planned with the MSP of Slovenia

Timetable for the execution of tasks

- 1. phase: Draft CEA for the whole sea and the draft Carrying Capacity of for the Development of Tourism – march 2024
- 2. phase: Final CEA for the whole sea and draft assessment of acceptability and cumulative impacts in the coastal zone on the sea – June 2024
- 3. phase: Finalized all three analyses – august 2024

Results will be:

- the basis for further detailed spatial planning at sea and in the coastal zone
- cross-border impacts and expansion of protected areas will also be taken into account.

Thank you for your attention!

Contact: sabina@zavita.si