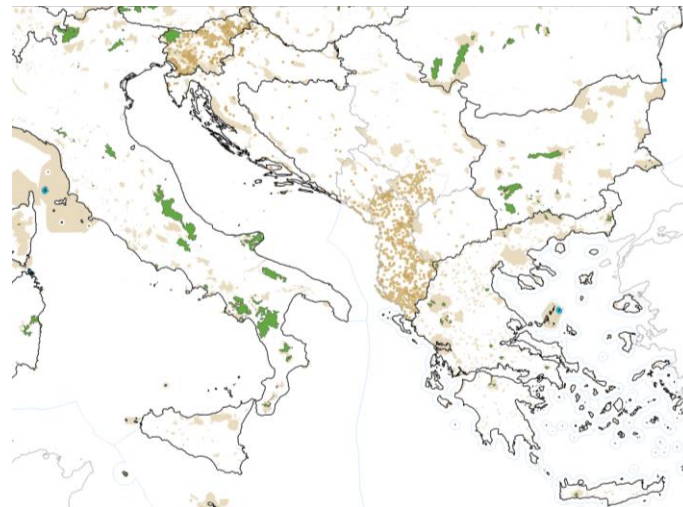
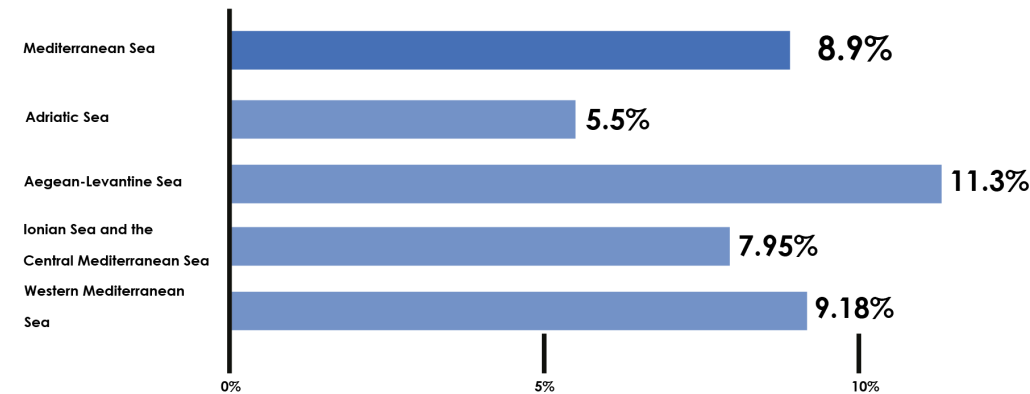


Marine Protected areas in the Adriatic and Ionian region.



Coverage by MPAs per marine region

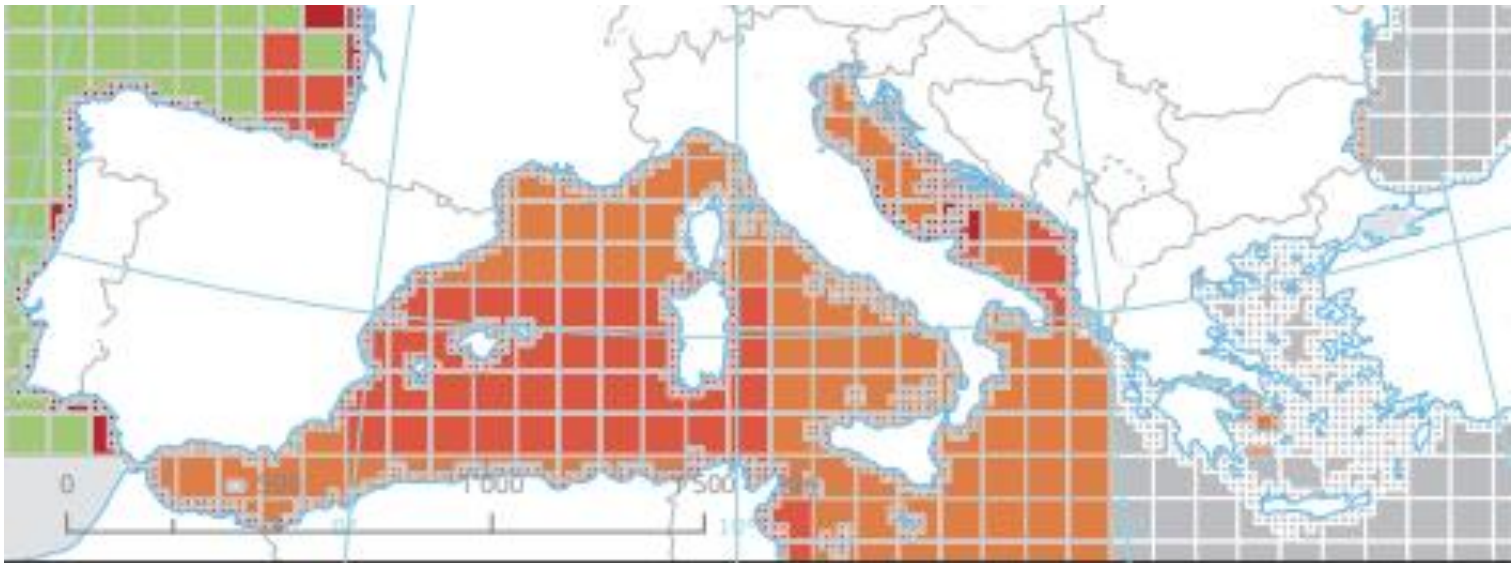


This is a shared region among 9 countries, 7 of which have a coastline, 4 of which are in the EU. All have on this in common, a shared coastline and connection to Adriatic and Ionian Seas.

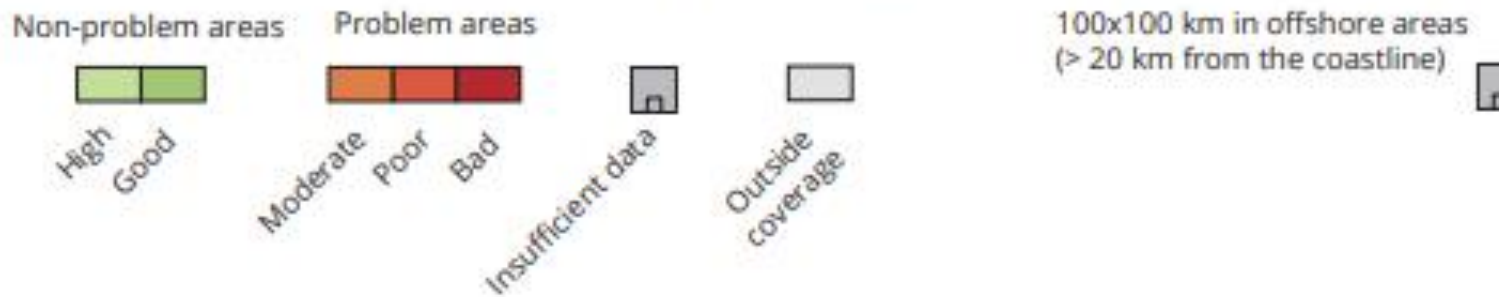
Threats and pressures that affect this region do not need exclusively individual responses, rather shared responses.

This is ,after all, about life!

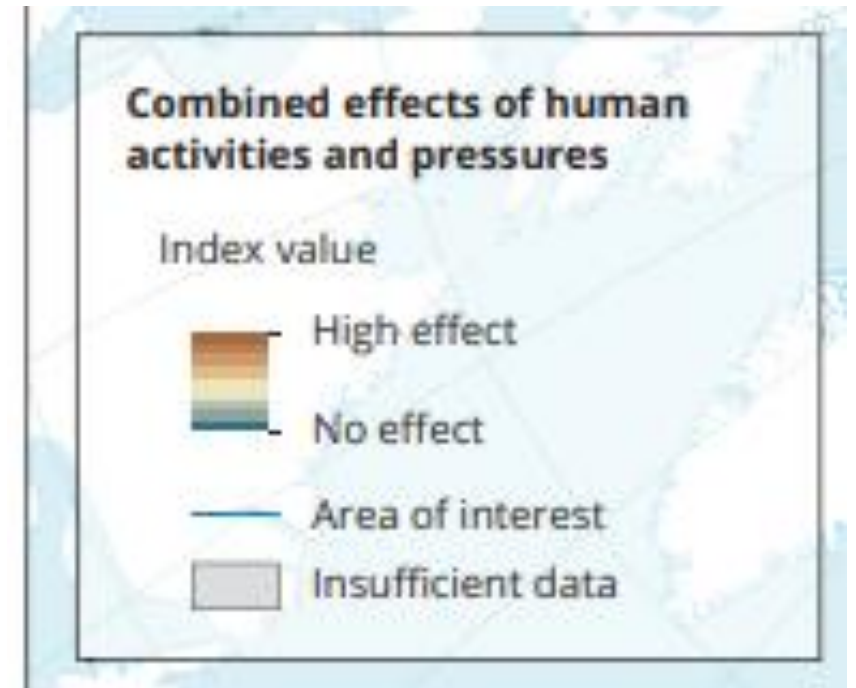
What condition is the sea in?



BEAT+ based classifications of Integrated classification of biodiversity condition in Europe's seas



What condition is the sea in?



Shared species and habitats

Shared Habitats

1110	Sandbanks	Status: Poor
1120	Posidonia beds	Status: Poor
1130	Estuaries	Status: Bad
1140	Mudflats and Sandflats	Status: Bad
1160	Large shallow inlets and bays	Status: Unknown
1170	Reefs	Status: Unknown
1180	Submarine structures made by leaking gases	Status: Unknown
8330	Submerged or partially submerged sea caves	Status: Poor

Shared species and habitats

Shared Species

+ **17** species including:

Leatherback turtle,
Loggerhead turtle
Green turtle
Humpback whale
Bottle-nosed dolphin
Common dolphin
Risso's dolphin
Striped dolphin
Cuvier's beaked whale
Fin whale

Status: **Bad**
Status: **Bad**
Status: **Bad**
Status: Unknown
Status: **Poor**
Status: **Bad**
Status: **Poor**
Status: **Poor**
Status: **Poor**
Status: Unknown

Shared solutions

The **EU Biodiversity Strategy** for 2030 lays out targeted action to put Europe on the path to ecological recovery within the next decade.

A key element of this Strategy is to protect a minimum of **30%** of the EU's Land and **30%** of the EU's sea area, with 1/3 strictly protected.

The post-2020 Global Biodiversity Framework by the CBD, to be agreed at Kunming later this year, will likely have a **30by30** target, that is in line with the EU Biodiversity Strategy.

Protected Areas

Current coverage of protected areas..

EU 27

25.7% of land

11.1% of ocean

Target

30%

30%

Distance to target

4.3%

18.9%

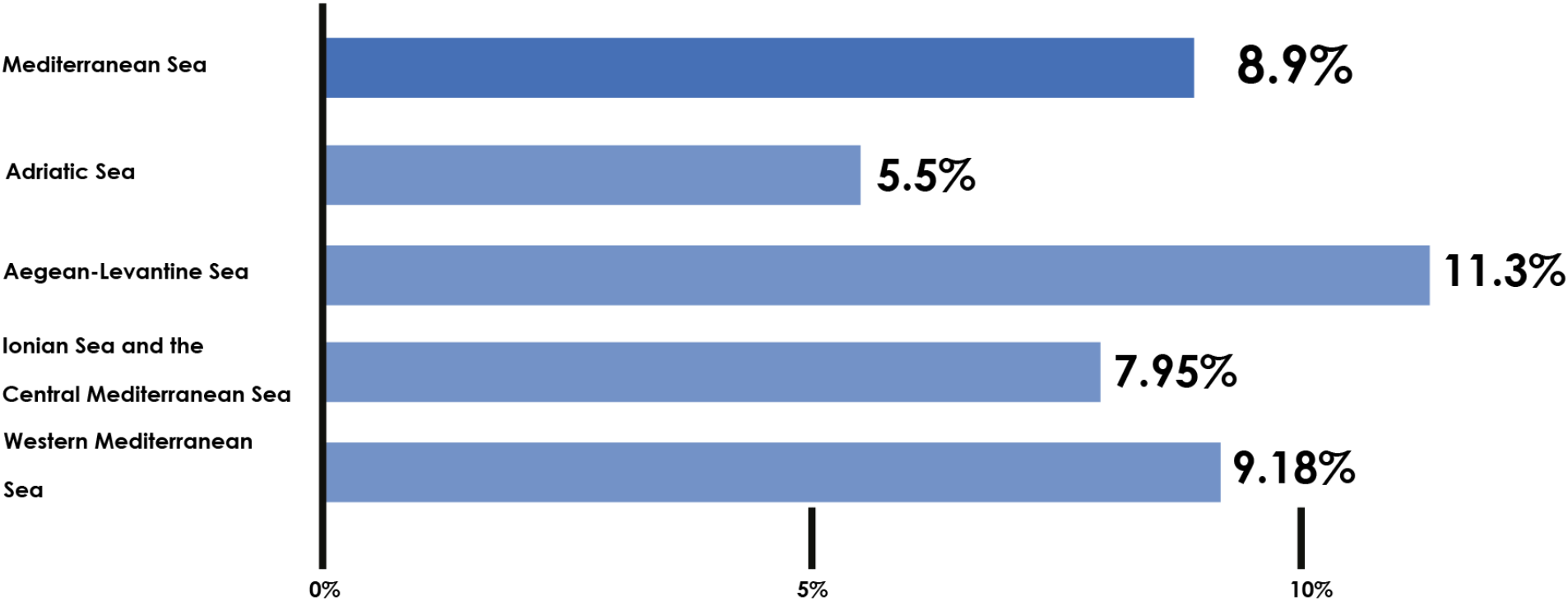
Source: EEA (2020).

Protected Areas = Natura 2000 + nationally designated areas.
Statistics based upon 2020 versions of data.
Natura 2000 = 18% of EU.

Protected Areas

Protected area coverage varies across the 4 marine sub-regions in the Mediterranean.

Coverage by MPAs per marine region



Shared solutions- opportunities

Expansion of the MPA network in this region, currently at 5.5% for the Adriatic.

Focus on connections between MPAs across national waters, shared problems, shared solutions—
Trans boundary (Marine) Protected areas.

Connections between land and sea, how do protected areas on land improve the quality of the sea.

Quality not just quantity.

A key focus on the EU Biodiversity Strategy is on the qualitative aspects of protected areas. All protected areas need to be **effectively managed**, with clearly defined **conservation objectives** and **measures** with appropriate monitoring in place.

To date the focus on much of the protected areas targets at a global level as been on the quantitative aspect, the proportion of land and sea covered by protected areas.

This is in part due to existing management effectiveness standards are insufficiently known and understood among practitioners

Going forward we need to focus as much on the **qualitative** as the quantitative.

Contact:

Dr Brian MacSharry
Head of Group, Biodiversity and Nature

European Environment Agency

Brian.macsharry@eea.europa.eu



<https://eunis.eea.europa.eu/sites/IE0001926>

It is an Irish karst landscape, so a little bit of the Adriatic in the West of Europe.