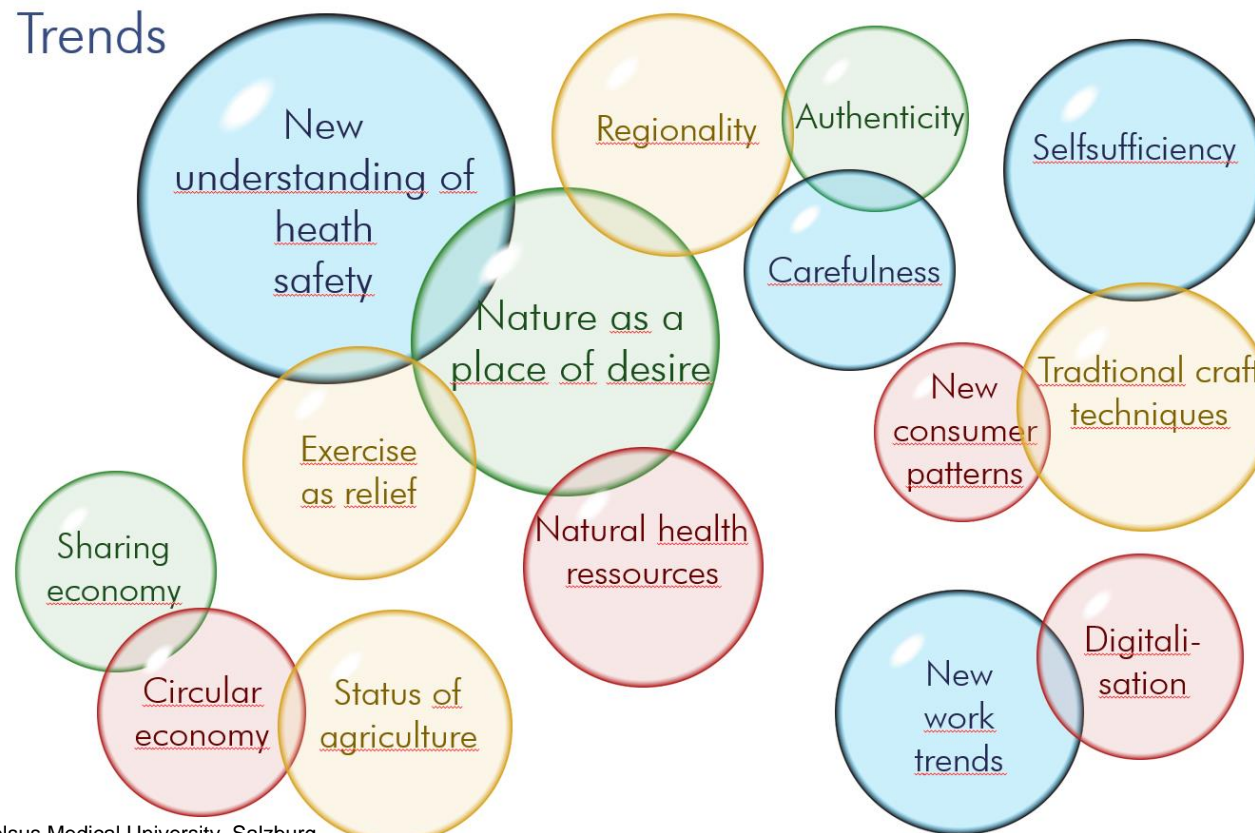


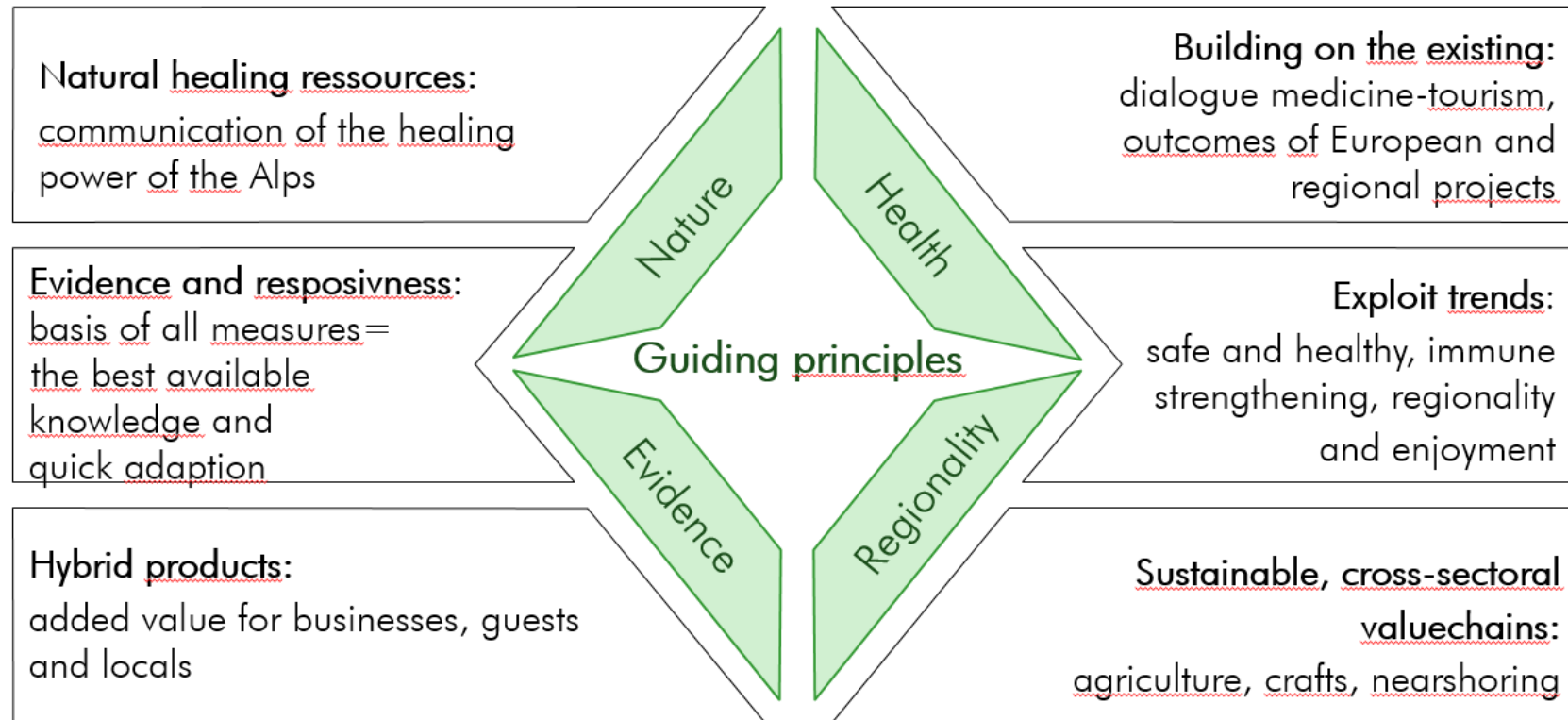
# EUSALP « Mountain geography – all year round tourism industry » connected with health trends

## Trends



Paracelsus Medical University, Salzburg

# Guiding principles



Paracelsus Medical University, Salzburg

## BACKGROUND OF THE PROJECT « TRANSITION OF SKI RESORTS AND MOUNTAINS IN A TOURISTIC POINT OF VIEW »

→ Research on the vulnerability of ski resorts and mountains in general → building a network of French ski resorts involved in the transition (at all levels, economical, ecological, energetical...). → Enlargement to the whole Alpine space.

Target : to shift from the only snow option to an « all year round tourism industry » → health tourism, pillow of the touristic diversification.



Ce document est cofinancé par l'Union européenne. L'Europe s'engage en France avec le fonds européen de développement régional et le fonds social européen.

